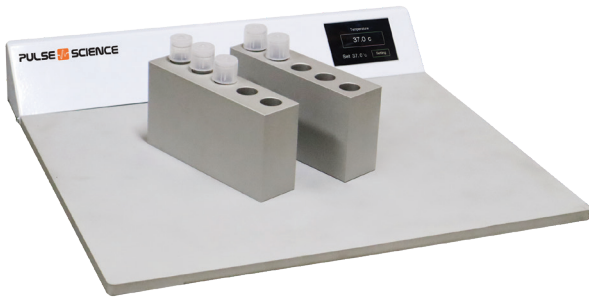


WARMERS

P50 Plate Warmer

is designed for heating all sample tubes requiring a stable heated environment. Digital display with Ergonomic design, low power consumption, and fast temperature recovery for use in IVF, IUI, pharmacy, biotechnology labs, etc.



FEATURES

- Digital display with excellent temperature stability of +/-0.2°C at 37°C
- Temperature control range is 5°C above ambient to +45°C
- A chemical resistant and easy to clean, hardened double-anodized surface

Extra Heated Workspaces

Overall dimensions (WxDxH)
425x386x62 mm
Warmed surface area (WxD)
420x320 mm
Weight: 5 kg.



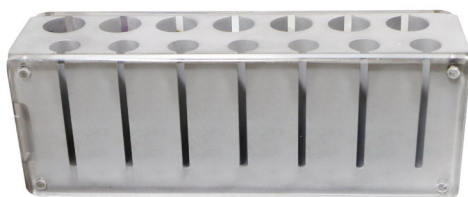
T14 TestTube Warmer

fits 14 test tubes of 14 ml and 5 ml. The Transparent Sides of the test tube warmer are removable for easy cleaning.

FEATURES

- Digital read out of temperature
- Control panel for setting
- Temperature accuracy +/-0.2°C at 37°C

High in performance and durability



Scratch resistant aluminum block



Overall dimensions (WxDxH)
100x124x195 mm
Weight: 1.2 kg.

